

IN CASE OF EMERGENCY

TOWNHOUSE OCCUPANT INSTRUCTIONS

(Post on inside of entrance door)

FIRE OR SMOKE ALARM (Continuous), HEAR "FIRE", OR DETECT A FIRE

- Grab personal emergency kit and pets for evacuation
- If safe to evacuate via front door, evacuate and place magnetic **ORANGE** decal on outside of door
- If not safe to evacuate via front door, in lower unit evacuate via patio, or in upper unit proceed to a balcony and await assistance, or climb down / jump to ground
- **DO NOT REMAIN IN BUILDING** - Go To Zone Emergency Meeting Place

TO REPORT A FIRE

- Shout "FIRE, FIRE, FIRE"
- Call 911
- Follow FIRE OR SMOKE ALARM instructions above

EARTHQUAKE

- Drop, cover and hold on
- Count 60 seconds after shaking stops before leaving cover
- Check all unit occupants for injuries
- Do not evacuate immediately unless danger is obvious in your unit, or instructed to do by Zone Captain or Damage Assessment Team
- Place appropriate magnetic decal on outside of entrance door (**GREEN - OK** and remaining inside, or **ORANGE** if evacuating)
- If evacuating, grab personal emergency kit and pets, Go To Zone Meeting Place

GAS LEAK: If you smell gas (rotten eggs) or someone yells "GAS LEAK"

- **DO NOT OPERATE ANY ELECTRICAL DEVICE** (e.g. light switch, cell phone, portable radio, etc.)
- Grab personal emergency kit and pets for evacuation
- Ground floor occupants evacuate via patio door (leave door open)
- Upper floor occupants, if safe to do so, open a balcony door or a window
 - If safe to evacuate via front door, evacuate and place magnetic **ORANGE** decal on outside of door
 - If not safe to evacuate via front door, proceed to a balcony (leave door open) and await assistance, or climb down / jump to ground
- **DO NOT REMAIN IN BUILDING** - Go To Zone Emergency Meeting Place

Your Townhouse Zone Colour is:

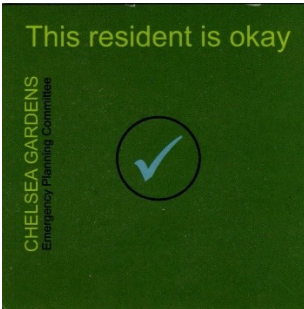
Your Townhouse Zone Captain is:

IN CASE OF EMERGENCY TOWNHOUSE OCCUPANT INSTRUCTIONS

(Post on inside of entrance door)

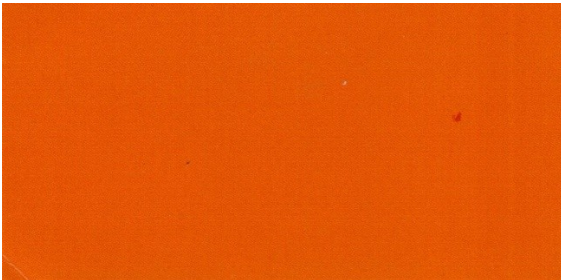
MAGNETIC DOOR DECAL DESCRIPTIONS

GREEN



Display the **GREEN** square magnetic decal on the outside of the entrance door after an earthquake if everyone inside is OK (including pets) and remaining inside the unit, no assistance is necessary, and you do **not** consider that occupants are in any immediate danger. Responders will not investigate.

ORANGE



Display the **ORANGE** rectangular magnetic decal on the outside of the entrance door after an emergency if everyone inside (including pets) have evacuated the unit.

PETS



Display the **RED/BLACK** square Please Rescue magnetic decal on the outside of the entrance door at all times when a pet lives in the unit. If the **GREEN** decal is displayed after an earthquake, responders will assume pets are OK. If the **ORANGE** decal is displayed after an emergency, responders will assume pets have been evacuated.

NOTE: If no **GREEN** or **ORANGE** decal is displayed on the entrance door after an emergency occurs, occupants/pets (if any) will be considered possibly at risk, and responders will investigate the unit.